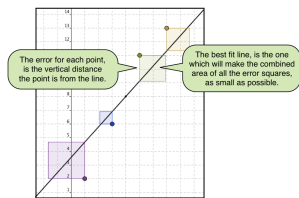
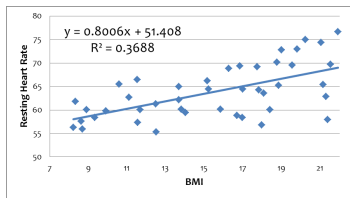
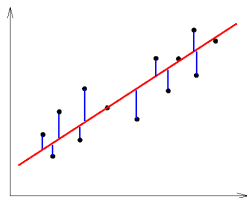


Strength of the Relationship: r^2 percent

- 0 to 10% **no**
 - 10% to 25% **weak**
 - 25% to 65% **moderate**
 - above 65% **strong**
- NOT a probability for correct nor a likelihood of on the line
 - measures the y -values distances via sum of squares as variation in the dependent variable explained by linearity



Picture citations:

- <http://cs.wellesley.edu/~cs199/lectures/35-correlation-regression.html>
- <http://www2.nau.edu/mat114-c/ch3a.php>
- <http://math.maine121.org/welcome/chapter-5/>