

Welcome to Linear Algebra!

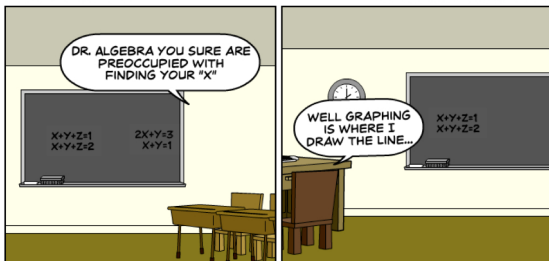
ASU: "Face-to face component is not a lecture but provides time for discussion, demonstrations, problem-solving, and higher-level thinking and collaborative activities. Class time is used to apply course content in ways that can only be accomplished when everyone is together in the same place"

<https://cetlss.apstate.edu/teaching-learning/course-delivery-options>


announcements, your questions, **starting next time: handwrite that gets turned in to ASULearn**, activities review and extend

DRAWING THE LINE

BY SARAH J GREENWALD



Where to Get Help

- class—I'm here to help!
-  need help from me, tutoring, class, or tech support
 - e-Z check in Zoom office hours:
Tues/Thur 9:45–10:30am and 2–3pm
Sun/Mon/Wed 7–7:45pm
 - private message (NOT e-mail, which gets buried)

I care about you and your success!



<http://alangregerman.typepad.com/.a/6a00d83516c0ad53ef0168e783575e970c-800wi>

Where Did Our Third Hour Go?



- rolled into the between class time on activities in ASULearn!

Course and Module 1 Overview

- Linear Systems of Matrix and Vector Equations
 - 1.1, 1.2 & 1.5: Gaussian elimination, algebra and geometry of solutions of systems of equations
 - 1.4: connects all via multiplying a matrix and a vector
 - 1.3 and 1.7: algebra and geometry of column vectors (linear combinations/mixing, span, linear independence)

problem set 1

- Matrix Algebra and Spaces

problem set 2

in-class assessment 1

- Linear Transformations and Orthogonality

problem set 3

- Determinants, Eigenvalues and Eigenvectors

problem set 4


in-class assessment 2

- Final Activities and Project

Scientific Computing and Linear Algebra

Active Learning Handwrite and Where to Get Help

no eating or drinking at tables, but you may step away if you need to hydrate or similar!

- class—I'm here to help!
-  need help from me, tutoring, class, or tech support
 - e-Z check in Zoom office hours:
Tues/Thur 9:45–10:30am and 2–3pm
Sun/Mon/Wed 7–7:45pm
 - private message (NOT e-mail, which gets buried)

I care about you and your success!




<http://alangregerman.typepad.com/.a/6a00d83516c0ad53ef0168e783575e970c-800wi>

Active Learning Handwrite

- unsolved Collatz conjecture, named for Lothar Collatz
- prizes
 - \$1,000,000 provided the proof appeared in a reputable mathematics journal before 2004
- Terrance Tao (2019)

	Class Tues	Between Classes (by 10:30am Thur)	Class Thur	Between Classes (by 10:30am Tues)
8/19 – 8/21	active learn- ing hand- write	2240 video download Maple (free) access e-text 1.1 read the e-text 1.1 interactive video 1.1 practice quiz syllabus	1.1 hand- write t-shirt Wed	turn in 1.1 handwrite 1.2 read the e-text 1.2 interactive video 1.2 practice quiz Maple intro video submit PDF ASULearn pic Zoom update & pic
8/26 – 8/28	1.2 hand- write	re-engage 1.1 turn in 1.2 handwrite 1.3 read the e-text 1.3 interactive video 1.3 practice quiz	1.3 hand- write t-shirt Thur	re-engage 1.2 turn in 1.3 handwrite 1.4 read the e-text 1.4 interactive video 1.4 practice quiz

Where to Get Help

- class—I'm here to help!
-  need help from me, tutoring, class, or tech support
 - e-Z check in Zoom office hours:
Tues/Thur 9:45–10:30am and 2–3pm
Sun/Mon/Wed 7–7:45pm
 - private message (NOT e-mail, which gets buried)

I care about you and your success!



<http://alangregerman.typepad.com/.a/6a00d83516c0ad53ef0168e783575e970c-800wi>