

## *Different ways to analyze popular culture (professions)*

- survey majors or professionals about why they choose it, or role models or the possible impacts of popular culture
- anecdotal, qualitative or quantitative



Lieutenant Uhura, *Star Trek* (1966–1969)

# NICHELE NICHOLS

ACTRESS, SINGER

BLACK  
HISTORY  
MONTH

AS LIEUTENANT UHURA IN THE ORIGINAL STAR TREK, NICHELLE MADE HISTORY AS ONE OF THE FIRST POSITIVE PORTRAYALS OF BLACK WOMEN ON TELEVISION. CIVIL RIGHTS LEADER MARTIN LUTHER KING, JR. PERSONALLY PRAISED HER WORK AND URGED HER TO STAY ON WHEN SHE CONSIDERED LEAVING THE SERIES. RECENTLY, SHE HAS WORKED WITH NASA TO HELP RECRUIT MORE WOMEN ASTRONAUTS.



2015

## *Different ways to analyze popular culture (professions)*

- choose a profession and track various representations of it
- choose a show and analyze the professions in that show
- track representations of professions in a time period, like in the years after the Motion Picture Production Code
  - content analysis as related to tropes and stereotypes and intersectionality perspectives of gender, class, race, age...
  - compare the representations of professions to reality— is popular culture modeling the current field, leading or dragging? [example male nurses]
  - no one representation is going to be perfect—analogy with scientific truth: patterns, reproducibility and consensus

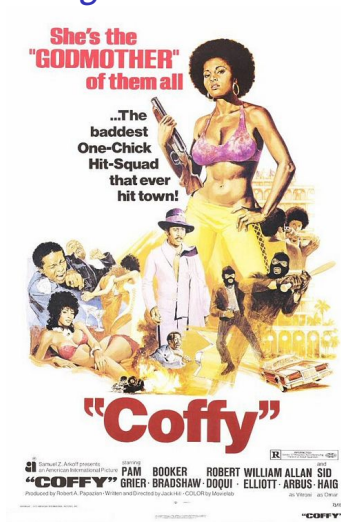
## *Associate Producer of the Six O'Clock News*



*The Mary Tyler Moore Show (1970–1977)*



# Vigilante Nurse



They call her 'Coffy' and she'll cream you! (1973)



## *Mechanics*



*Chico and the Man (1974–1978)*

## High School Teacher



*Welcome Back Kotter* (1975–1979)

## Second Part of Homework

2. Research a profession of interest and find a few aspects of how gender representations of it appear in popular culture. Be intentional about searching for intersectionality connections: class, race, age, bodies...

Example:

*Chicago Fire* (2012– )

transgender firefighter movie

transgender firefighter tv